

epati

Proxy Configuration with PAC on the Client Side

Product: Antikor v2 - Next Generation Firewall
Configuration Examples

Proxy Configuration with PAC on the Client Side

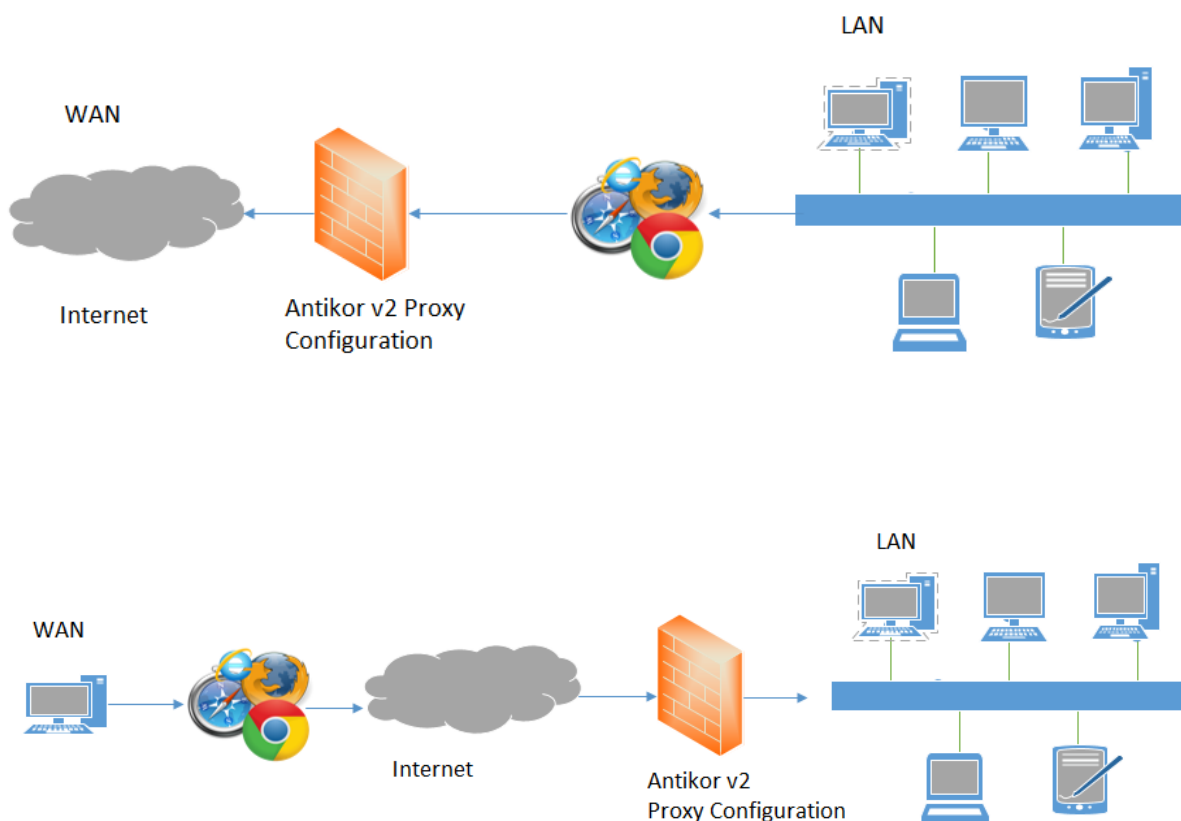
Summary

The “PAC” files that use JavaScript code are a tool that allows clients to access the internet via proxy according to the rules determined by the system administrators.

Settings that can be made in the following main headings;

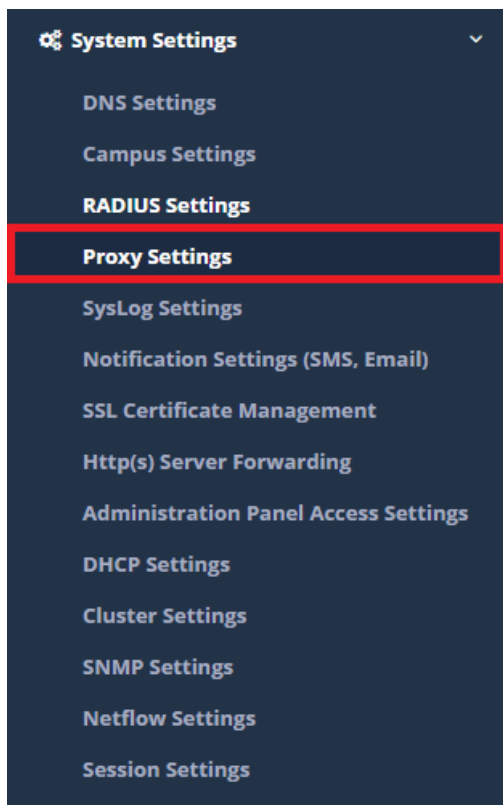
- Proxy server of clients will not visit while access to specified sites
- Does not send unnecessary traffic to the proxy server for web applications on the local network
- Applications such as Windows update and wsus do not send the correct traffic to the proxy server
- Users can access the internet without any setting changes in locations where there is no access to the proxy server

Network Topology

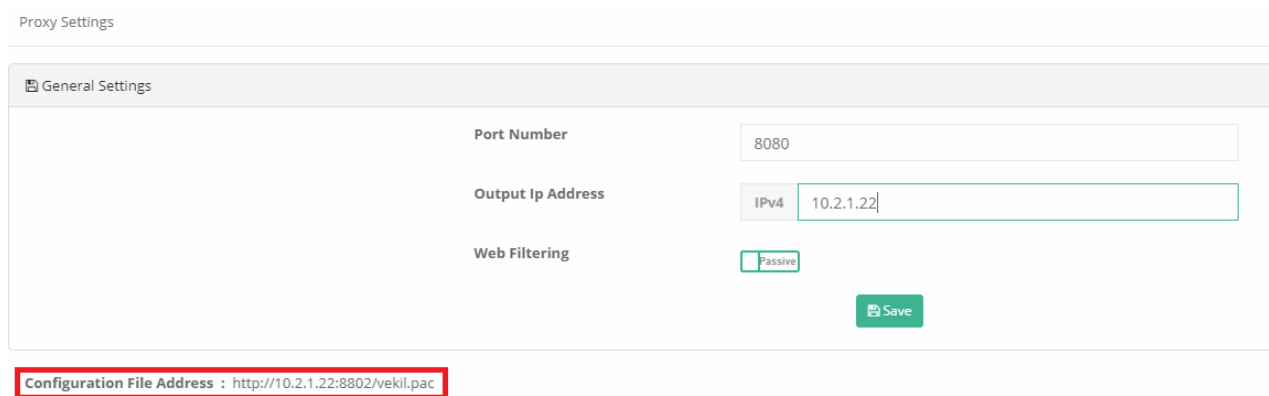


Configuration

Click the Proxy Settings under the System Settings menu.



The "Configuration File Address" in the General Settings section is copied.

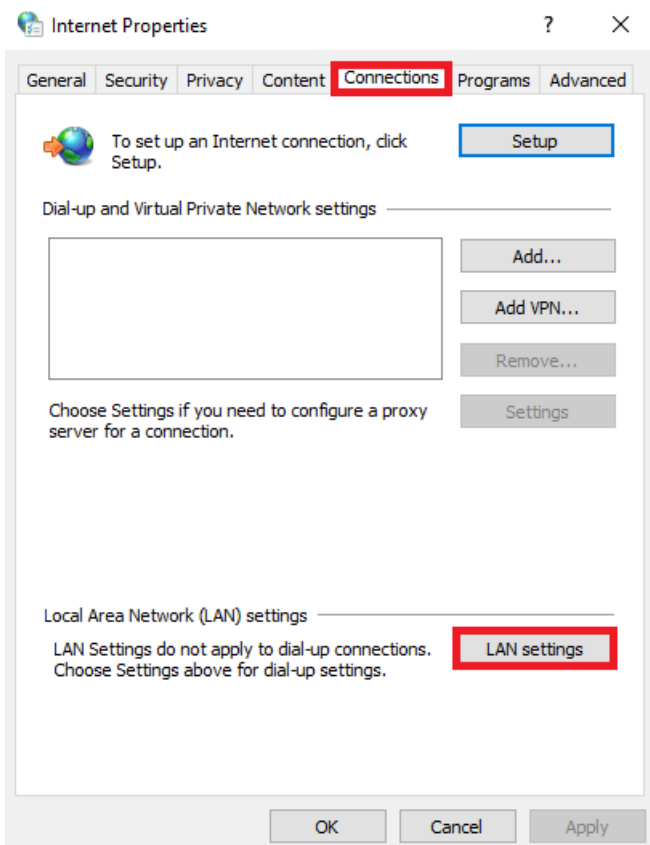


The address copied is entered in the proxy settings field of the browser we want to use.

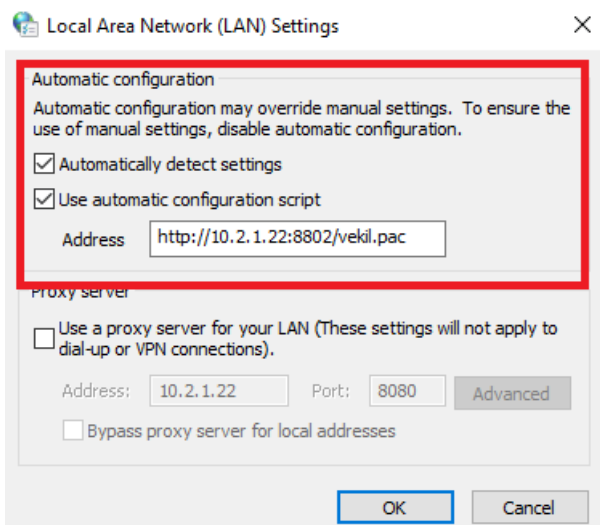
Google Chrome;

Firstly, click Customize and Control later Open Proxy Settings.

Click, the LAN Settings under the Connections tab , on the opened window.



The settings are as shown below. The "Configuration File Address" copied is entered in the address field.



Firefox;

Click, the Network Proxy under the Open Menu.

The settings are as shown in the picture below;

Connection Settings

Configure Proxy Access to the Internet

No proxy

Auto-detect proxy settings for this network

Use system proxy settings

Manual proxy configuration

HTTP Proxy Port

Use this proxy server for all protocols

SSL Proxy Port

FTP Proxy Port

SOCKS Host Port

SOCKS v4 SOCKS v5

No Proxy for

Example: .mozilla.org, .net.nz, 192.168.1.0/24

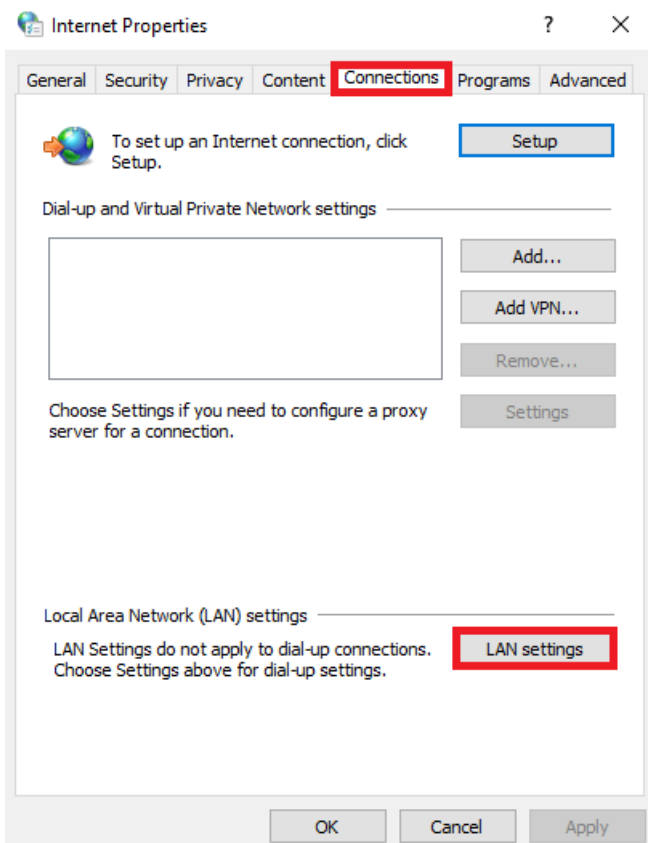
Automatic proxy configuration URL

Do not prompt for authentication if password is saved

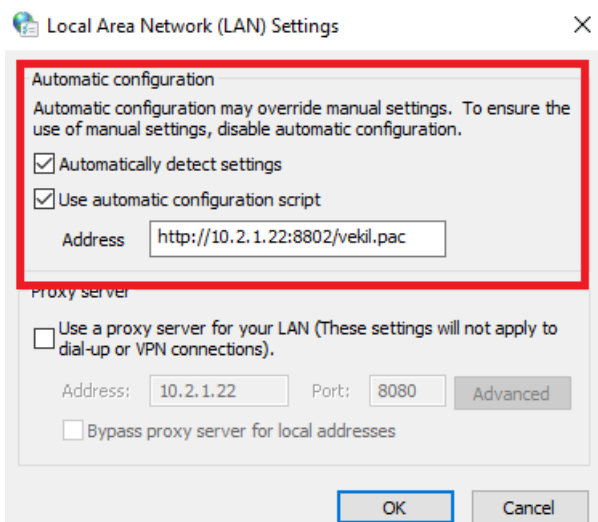
Internet Explorer;

Click, the Internet Options under the Tools. After, click the LAN Settings under the Connections tab , on the opened window.



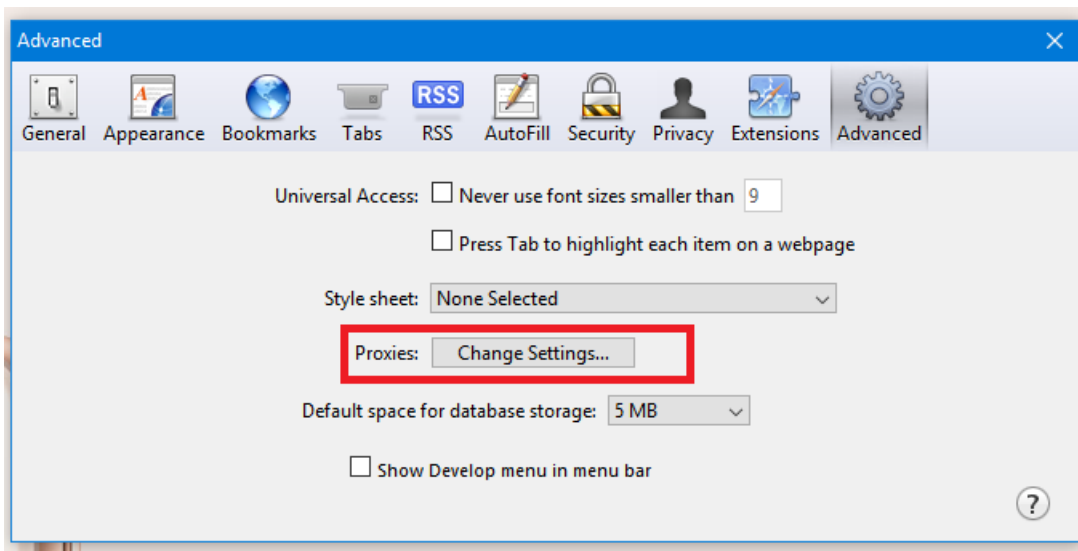


The settings are as shown below. The “Configuration File Address” copied is entered in the address field.

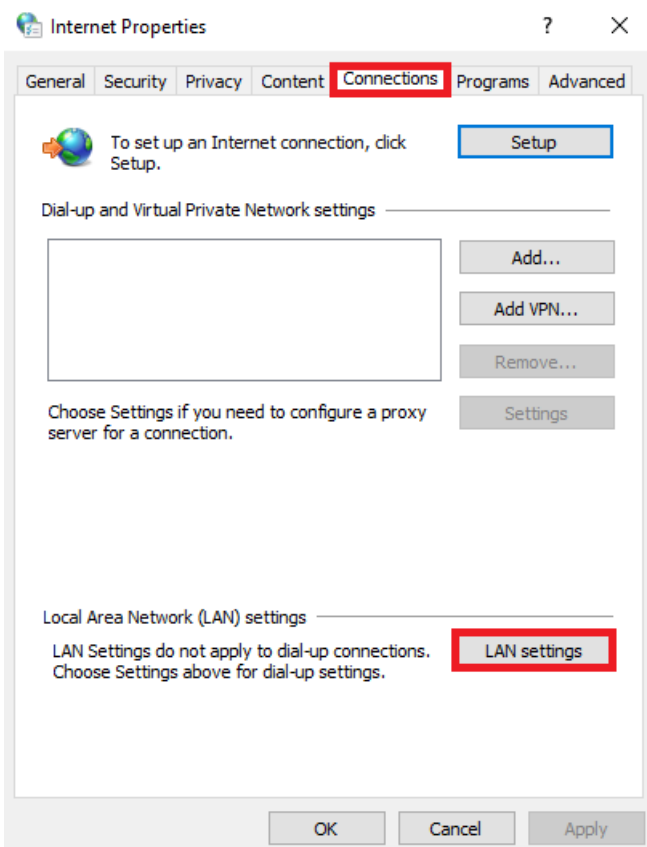


Safari;

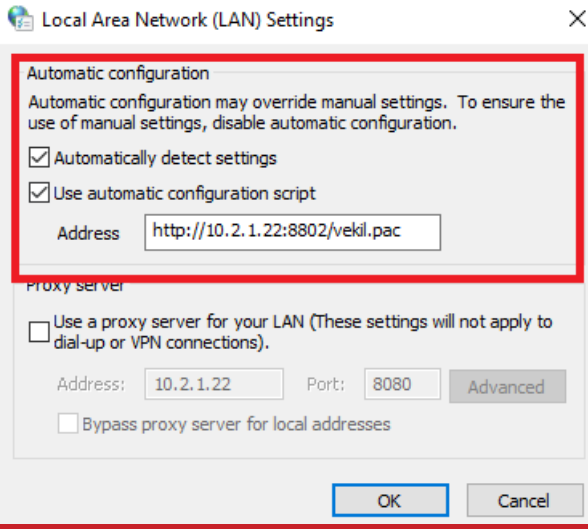
Click, the Preferences under the Settings menu. After, click the Change Settings under the Advanced menu.



Click, the LAN Settings under the Connections tab , on the opened window.



The settings are as shown below. The “Configuration File Address” copied is entered in the address field.



ePati Cyber Security Technologies Inc.
Mersin Universitesi Ciftlikkoy Kampusu
Teknopark Idari Binasi Kat: 4 No: 411
Zip Code: 33343 Yenisehir / MERSIN / TURKIYE

www.epati.com.tr
info@epati.com.tr
+90 324 361 02 33
+90 324 361 02 39

